


FLOOR PLAN

COMWELL COPENHAGEN PORTSIDE

DOLCE BY WYNDHAM

| MEETING ROOMS | m ² | HEIGHT METERS |  | | | | | | | | | | |
|-----------------------------|----------------|---------------|--|---------|------------|---------|---------|----------|-----------------|-----------------|----------|----------------------|------------------|
| | | | BOARD-ROOM | U-SHAPE | CLASS-ROOM | THEATRE | CLUSTER | CONGRESS | BANQUET (8 PAX) | CABARET (6 PAX) | COCKTAIL | BIG ISLAND (6/8 PAX) | ISLAND (4/6 PAX) |
| A | 274 | 4,3 | - | 50 | 128 | 234 | 140 | 160 | 112 | 90 | 120 | 90/120 | 92/120 |
| B | 148 | 4,3 | - | 28 | 70 | 144 | 80 | 92 | 80 | 66 | 60 | 48/64 | 60/72 |
| AB | 422 | 4,3 | - | - | 204 | 414 | 232 | 280 | 184 | 156 | 200 | 156/208 | 168/210 |
| C | 54 | 3,5 | 14 | 16 | 20 | 43 | 16 | 24 | - | - | - | 12/16 | 12/18 |
| D | 60 | 3,5 | 18 | 22 | 24 | 62 | 24 | 32 | - | - | - | 24/32 | 24/36 |
| E | 67 | 3,4 | 22 | 22 | 32 | 79 | 36 | 48 | - | - | - | 24/32 | 24/36 |
| F | 67 | 3,4 | 22 | 22 | 32 | 79 | 36 | 48 | - | - | - | 24/32 | 24/36 |
| G | 91 | 3,4 | 22 | 26 | 40 | 112 | 48 | 68 | 40 | 36 | 36 | 36/48 | 32/36 |
| H | 207 | 3,2 | - | 46 | 112 | 222 | 120 | 140 | 112 | 90 | 100 | 72/76 | 80/114 |
| M1 | 17 | 2,5 | 8 | - | - | - | - | - | - | - | - | - | - |
| M2 | 17 | 2,5 | 8 | - | - | - | - | - | - | - | - | - | - |
| M3 | 17 | 2,5 | 8 | - | - | - | - | - | - | - | - | - | - |
| M4 | 17 | 2,5 | 8 | - | - | - | - | - | - | - | - | - | - |
| M5 | 17 | 2,5 | 8 | - | - | - | - | - | - | - | - | - | - |
| M6 | 17 | 2,5 | 8 | - | - | - | - | - | - | - | - | - | - |
| M7 | 17 | 2,5 | 8 | - | - | - | - | - | - | - | - | - | - |
| M8 | 17 | 2,5 | 8 | - | - | - | - | - | - | - | - | - | - |
| M9 | 40 | 2,5 | 14 | - | - | - | - | - | - | - | - | - | - |
| NET-WORK | 172 | 2,5 | - | - | - | - | - | - | - | 80 | - | - | - |
| LOW DECK event space | 1.200 | - | - | - | - | - | 600 | - | - | 600 | - | - | - |

OBS! Ovennævnte tal er max. kapacitet pr. lokale ekskl. underviserbord

NB! The figures above are max. capacity per room excl. teacher's table

1000/1000 Mbit Wi-Fi ✓
 Bodylab ✓
 Restaurant ✓
 (Capacity: 400 personer)

Bar ✓
 Close to metro ✓

Number rooms: 482
 Meeting and conference rooms: 17

Changes and printing errors may occur.

FLOOR PLAN

COMWELL COPENHAGEN PORTSIDE

DOLCE BY WYNDHAM

| | DESCRIPTION | EXHIBITION | WORKSHOP | CAR SHOW | ANNIVERSARY / RECEPTION | KICK OFF | LARGE MEETINGS (EXCL. SHAREHOLDERS MEETINGS) | DAYLIGHT | PARTY |
|--|---|------------|----------|----------|-------------------------|----------|--|----------|-------|
| MEETING ROOMS | | | | | | | | | |
| A | Screen, microphone, audio induction loop, car access | X | X | X | | | | X | X |
| B | Projector, microphone, audio induction loop, car access | X | X | X | | | | X | X |
| AB | Screen, microphone, audio induction loop, car access | X | X | X | X | X | X | X | X |
| C | Screen | | | | | | | X | |
| D | Screen | | | | | | | X | |
| E | Screen, access terrace | | | | | | | X | |
| F | Screen, access terrace | | | | | | | X | |
| G | Screen, access terrace | | | | X | | | X | X |
| H | Projector, switch to restaurant layout possible, plenty of light with a view of the water | | | | X | X | | X | X |
| M1-M8 | Screen, fixed table layout, access to outside courtyard | | | | | | | X | |
| M9 | Screen, boardroom, fixed table layout | | | | | | | X | |
| LOWER DECK <i>Exhibitions/events</i> | 1200 sq.m. Accessible from ground floor = double doors. Power outlet: 32A. Direct access by car/van | X | X | X | | | | | X |
| COURTYARD <i>1st floor</i> | 150 sq.m. covered. Flexible lounge furniture, patio heater, barbecue | | X | | X | | | X | |
| LOBBY | 150-200 sq.m. Possible to exhibit 5-6 cars | X | X | X | X | | | X | |

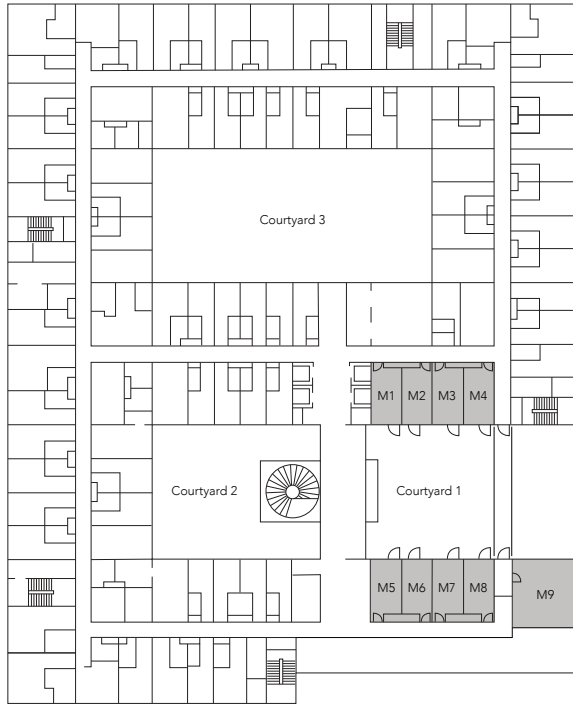
* A-M9: blackout curtains possible

FLOOR PLAN

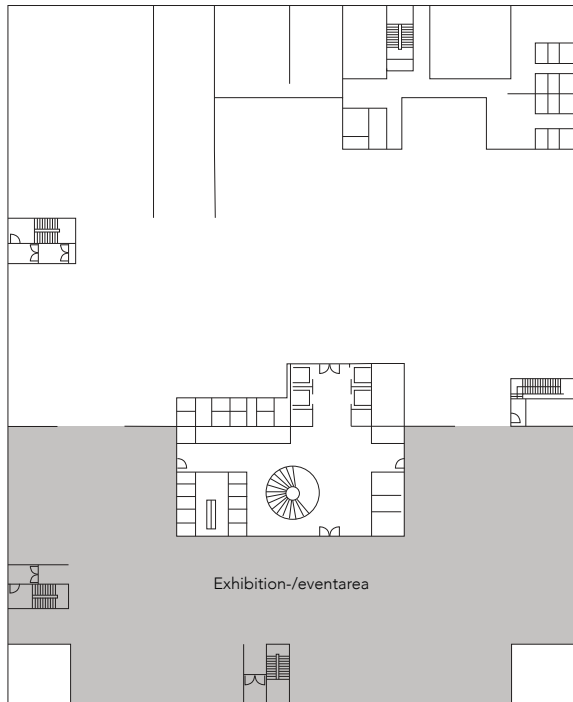
COMWELL COPENHAGEN PORTSIDE

DOLCE BY WYNDHAM

1. floor



Lower deck



Ground floor

